

# ORR prohibition notice Cardiff DU

## Anglia response

# ORR Prohibition notice information

A prohibition notice has been served by the ORR on Cardiff DU last week following some site inspections with a welding team.

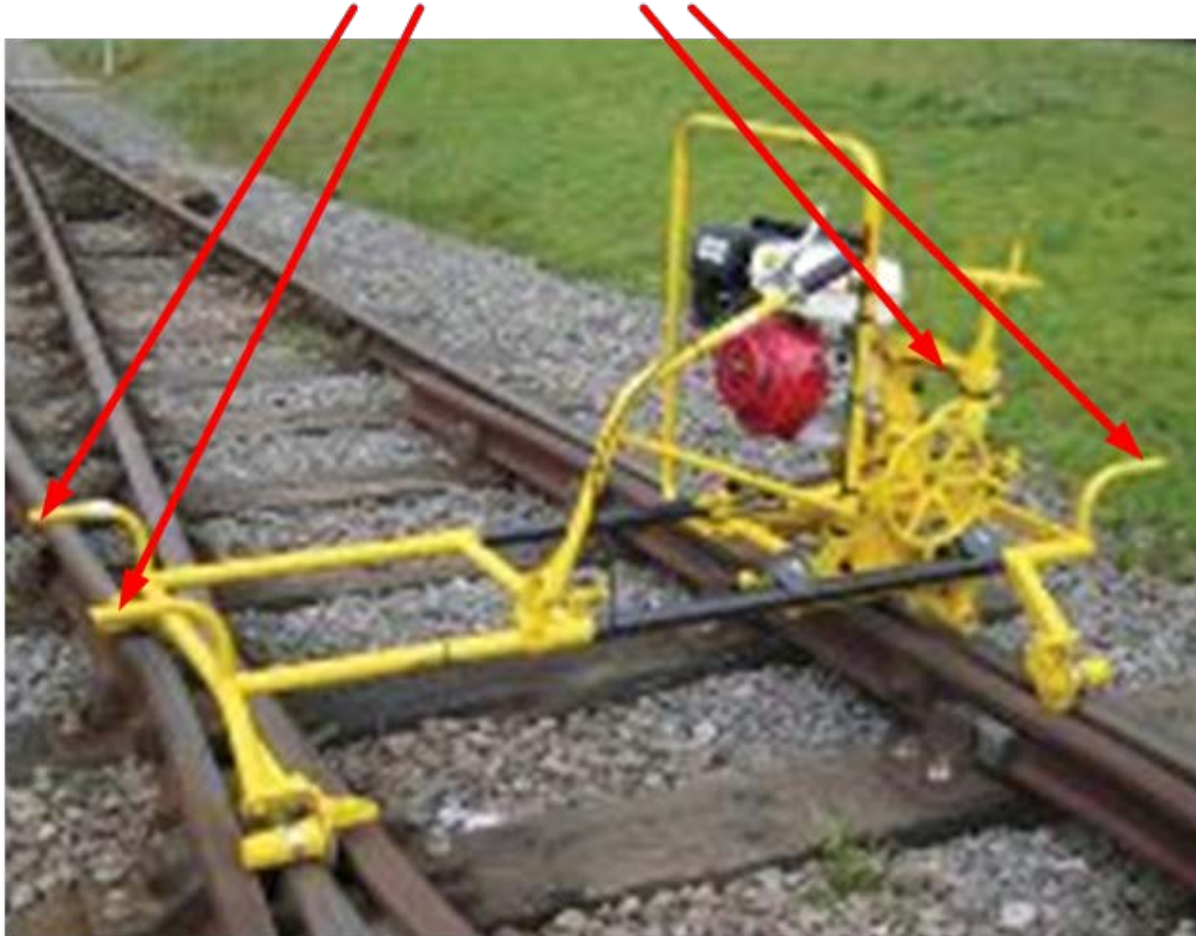
The notice is banning two man lifting of the MC3 Grinding Machine (also known as the frog grinder) which by design is a four man lift.

The unit itself has four handles and the number of handles on any piece of machinery give you the number of people required to lift the machinery.

This should also be covered during the training session within the course syllabus.

# MC3 Grinding Machine

Notice the four handle design which should immediately indicate the number of people required to lift the unit. This should not be lifted without four people being present.

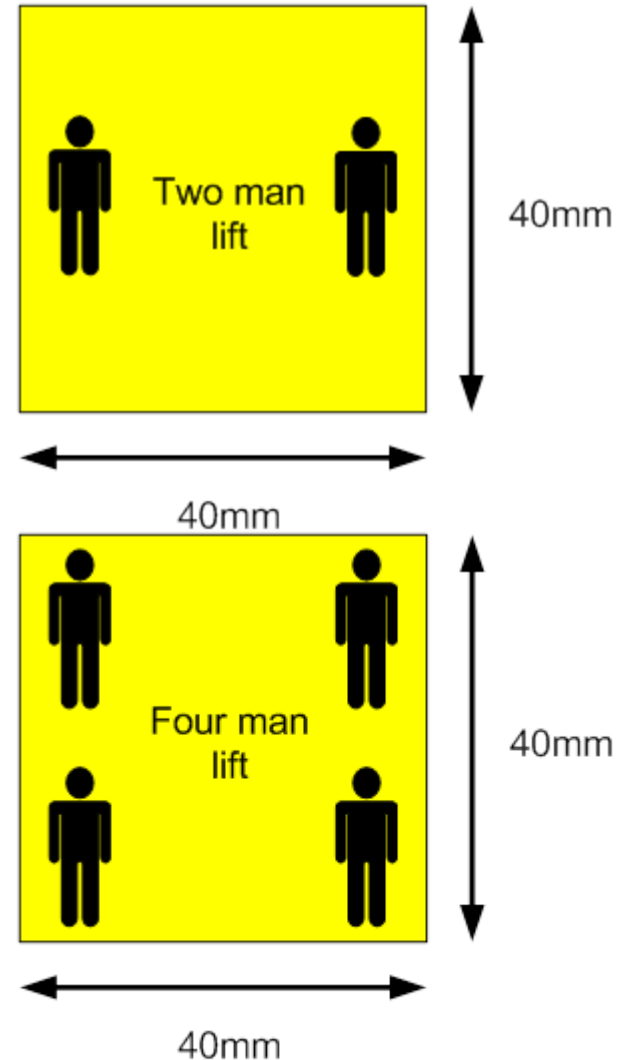


# What the DU is doing

The Delivery Unit will complete a review of all plant and reintroduce the plant lifting stickers shown.

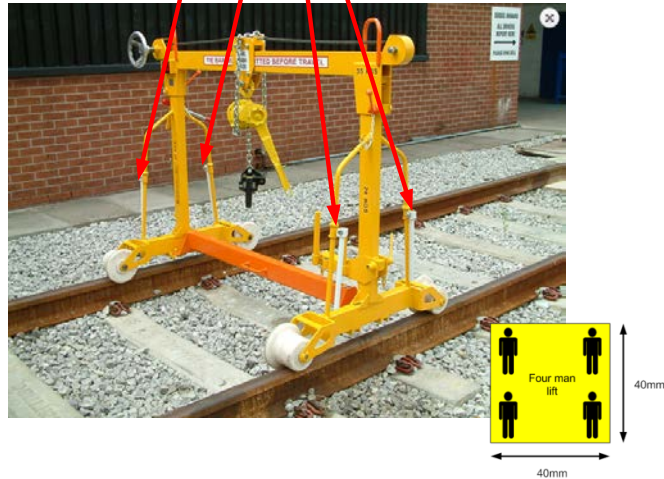
These have already been ordered and will be distributed to stores personnel to attach them to plant to provide knowledge and guidance permanently going forward.

In addition consideration must be given during the planning stage as to the plant being used in comparison to the access point.



# Other examples

Iron Man (when built) four handles = four man lift



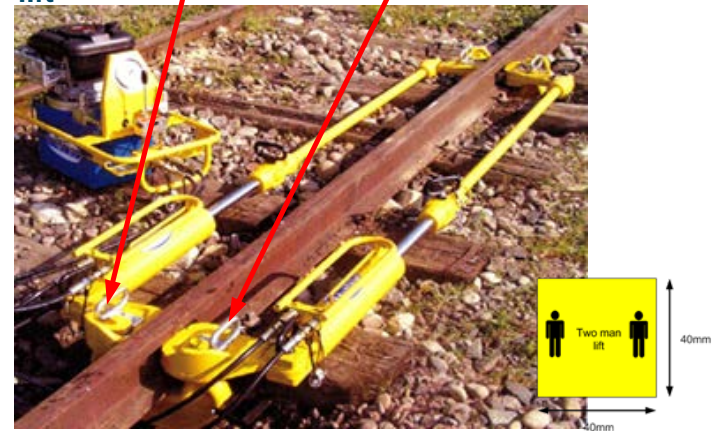
Standard lighting generator no handle but still a two man lift due to weight and size



There are exceptions, a strimmer has two handles but this is single use design



Tensors (disassembled) saddles two man lift





## ***What you need to do***

Plan ahead and ensure you have enough people to cover the lifting requirements. Consider the work and the access point. For instance

- Is there another access point where you have level ground and no stairs which can reduce the manual handling risk.
- Are the stairs/access gates wide enough to carry the tools etc
- Are the other departments at site who can assist in the loading and unloading of tools/materials.
- Is there another way of completing the works using other tools or machinery.

