

Network Rail Eastleigh Delivery Unit Staff Incident -

Sunday, 20th December 2015

Incident Details

Date: Sunday, 20th December 2015

Time: 04:15 am

Location: Salisbury Depot

Task: Loading sleepers onto a flat bed via the tail lift

Employee: Operative, P.Way, Salisbury Depot

Equipment Involved: Tail Lift, Timber Nips

Injuries Sustained: A cut ring finger on his right hand despite wearing canvas gloves

Immediate and Underlying Causes

Immediate Cause:

The Operative tried to catch the sleeper to prevent it from slipping, trapping it against another sleeper

Underlying Causes:

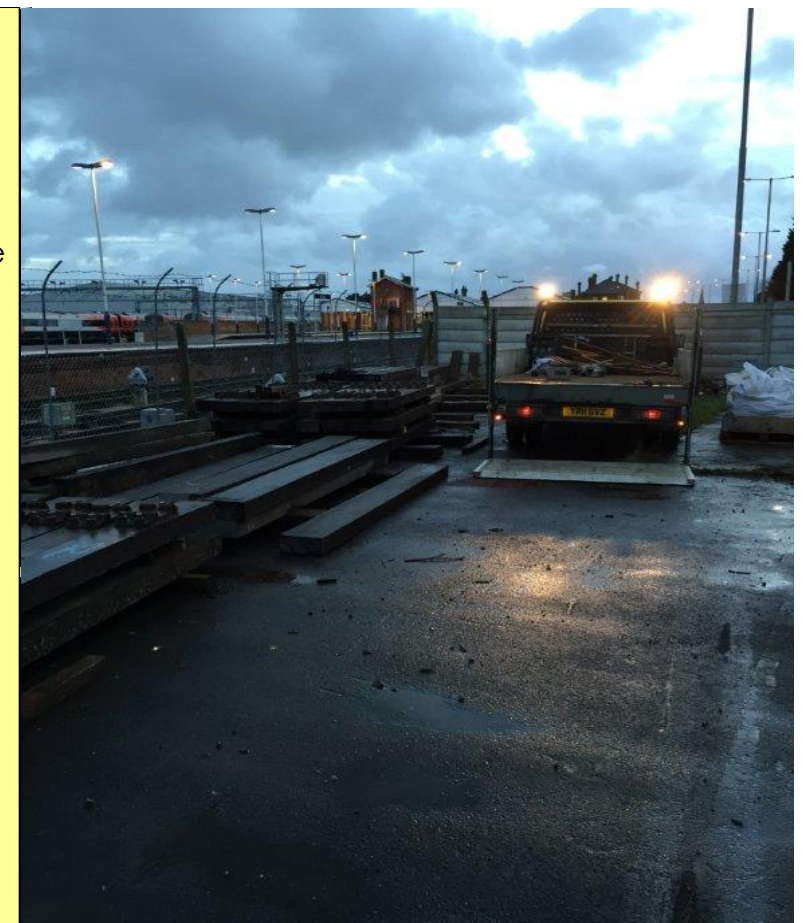
Working conditions and Manual Handling



Stored sleepers and timbers in Salisbury Yard
Picture taken of the positioning of the staff involved in the incident

Positioning of flat bed in relation to stock pile. →

This was the second load that the gang had loaded that night, as a load had already been taken to site and installed.



The injured person visited A&E and had to have the cut on his finger glued

He lost no further time as a result of his injury



Next Steps:

- Have you carried out a Dynamic risk assessment of your work taking into account changing weather conditions?
- Have you considered what Manual Handling is required and planned to eliminate manual handling?



1

2