



# Infrastructure Projects Southern Home Safe

The Southern Region's Weekly Safety Update

06 July 2016

## Southern Shield Pocket Guide for PPE



A new pocket guide for PPE has been launched in the Southern Region. The guide confirms the minimum PPE requirement on site, it also includes advice on how to wear PPE correctly, and to risk assess the appropriate PPE for the task and the environment you are working in. A poster version of the pocket guide is now available. If you would like a copy of the guide please [contact us](#).

The poster can be downloaded from the [Southern Shield](#) website.



Click on the shield above to access our website

### Latest Safety Flash

A [safety flash report](#) was issued last week after an operative suffered alkali burns while working with wet concrete.

**Remember... Always wear the correct PPE for any task involving wet concrete.**

A [safety flash report](#) was issued today after an operative at a non-rail site lost his eye after being struck by a pressurised screen pump.

### Site security

A group were caught by the site staff at Crayford attempting to steal some redundant cable left at the lineside between Crayford and Bexley Stations. The cable was awaiting recovery. As the site staff approached the group ran off. This was reported to the British Transport Police.

**Are your sites as secure as they can be?**

## Secure Sites

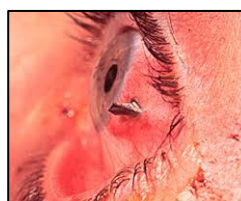
A member of the public found their way onto a work site at platform 20 at London Waterloo Station. The person seemed to be lost and was also suspected of being intoxicated. They were escorted off the site. The incident was reported to the Waterloo Station Manager who reviewed their CCTV footage. The footage showed that a gate had been left open by station staff for refuse collection and access to the arches.

In last week's edition of Home Safe we reported an attempted cable theft from a site in Northfleet. Yesterday at the same site staff arrived at work and discovered that their welfare unit was missing. Thieves also attempted to take the dumper and the excavator. A toolbox talk regarding secure sites can be found on the [Southern Shield website](#).

**Remember.... A secure site stops thieves and members of the public (including children) trespassing and seriously injuring themselves.**

## Shared learning

The Thameslink Programme have released [Lesson Learned](#) regarding an eye injury and the importance of risk assessing the work you are doing and wearing the appropriate PPE.



Contact us: [shield@networkrail.co.uk](mailto:shield@networkrail.co.uk)

# Home Safe

## Innovations at Shoreham



A new bio security system has been installed on a project at Shoreham Viaduct.

Everyone who works on, or visits the site has their details logged into the new system as part of their site induction. A copy of their index fingerprint is taken alongside a scan of their CSCS card which retrieves their professional details. Everyone completes a health questionnaire, is asked to confirm whether they are taking any prescription drugs and confirms their next of kin contact details.

Only once this is completed are they then authorised to enter the construction site.

The system features a wireless emergency fire and first aid call point alongside a biometric fingerprint recognition turnstile. If the fire alarm is triggered the turnstiles automatically reverts to a free wheel, allowing all staff and visitors to exit the site quickly and safely. The system will automatically print out a list of people who have entered the site on that day; this list is then used for the roll call.

## What about after the incident?

A crane supervisor working at the Aldershot Bridge replacement project tripped over an outrigger mat on site. This resulted in a bruised arm and was reported as a minor injury.

He continued working but later that evening and over the weekend his arm started to hurt him. He attended hospital a few days later and it was confirmed he has suffered a radius fracture to his elbow. As the colleague confirmed he was ok to continue working there was no follow up contact made by the principal contractor.

***Lessons learned... The area around outrigger mats should be physically barriered off, with a path created to the crane cab and suitable lighting.***

## Floods at Wrecclesham

Heavy rains resulted in the banks of River Wey bursting and flooding at the site compound at Wrecclesham. The water in the compound was up to one metre deep. The incident occurred the day before a 52 hour possession and access to the site was deemed unsafe.

The site was securely cordoned off and an alternative compound was set up outside of the flood plain, enabling the possession works to go ahead.



## Emergency evacuation at Streatham Common

A suspect package was discovered on board a train. The Driver raised the alarm and asked passengers to evacuate the train at Streatham Common station.

Other lines at the station were kept open to allow other services to use the station.

The British Transport Police arrived on the scene and confirmed that the suspect package was lost property.

## Dog bite during letter drop

An operative was undertaking a leaflet drop to inform local residents of works taking place in the area. Whilst he posted a leaflet through one of the resident's front door their dog bit his middle finger.

The operative visited hospital and was given an anti- tetanus injection and a course of antibiotics.

***Remember...Do not put your fingers through the letter box if you are delivering letters to residents.***



**EVERYONE HOME SAFE  
EVERY DAY**

***If you would like a colleague to receive Home Safe, please contact***  
***[Daisy.Read@networkrail.co.uk](mailto:Daisy.Read@networkrail.co.uk)***

**Contact us: [shield@networkrail.co.uk](mailto:shield@networkrail.co.uk)**