

Back to Work – Start Safe

January 2017



Welcome Back

Whether you were at home or working, we hope you and your families had a great Christmas and New Year!

Wandsworth Town

The South Western Railway

Back to Work – Start Safe



Contents:

1. A look back:
 - Safety success stories from 2016
2. Looking forward:
 - Starting 2017 safely
 - Addressing common causes of accidents
 - Maintaining a tidy railway
3. Key Points
 - Handy hints & tips to get everyone home safely everyday

Thank you

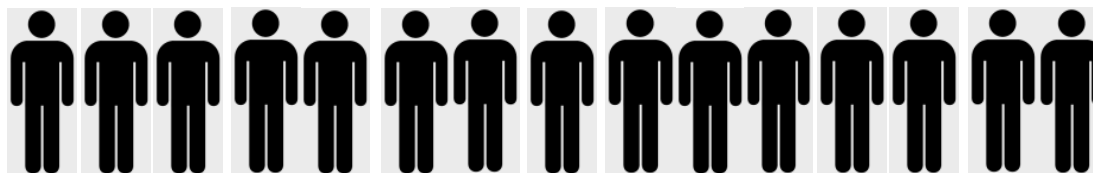
We had a successful 2016 across the Wessex Route...



Fareham - Track replacement

Serious Accidents

Serious harm DECREASED— with three fewer accidents in 2016.



27

Serious
Accidents
2015/16



24

Serious
Accidents
2016/17

Close Calls

You spotted and reported nearly **3000** close calls in 2016 and **closed 80%** of them within 90 days before they could cause harm.



Unsafe Acts

SSoW Close Calls.

Whilst being briefed on a SSoWPS pack before taking part in a renewal hand back walk the incorrect line speed was briefed and recorded on the SSoWPS pack as 40 and not 60. This was corrected accordingly before the walkout was undertaken.

1. Contractors had an unsafe system of work approved. It was intended to install ozone injection system into ductwork.
2. Works had not been sufficiently detailed or thoroughly risk assessed.
3. A new risk assessment was completed before work was allowed to start.

A COSS left a group and did not appoint another COSS to take charge in his absence.

Wrong or misleading information

Contractor attending site stating he was a Crane Controller, Sentinel Check revealed that the individual did not have the Crane Controller competence

Individual passing on to others critical information as fact which they do not know to be true and have assumed is correct.

Not booking on or off site with either the COSS, ES, Site Office, or other site controlling authority.:

13

26-Sep-16

Risk of noise levels not included in SSoW briefing.

Walking across an authorised walking route without Hi-Viz

Worksite managed in a hazardous unorganised condition with tools and materials left for staff to trip over

Old boots with little tread

Driver not wearing a Seat Belt.

17

22-Nov-16

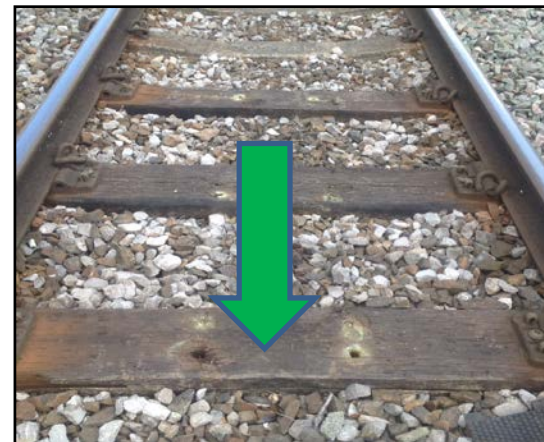
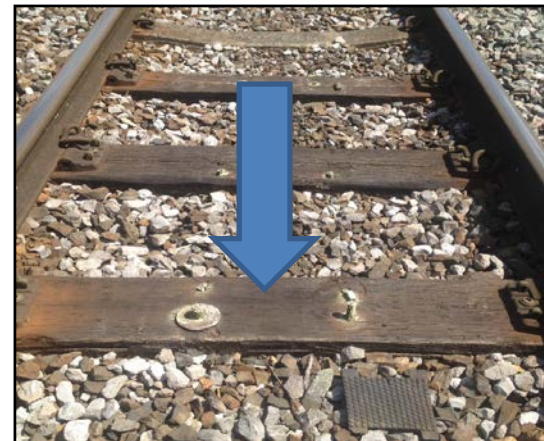
Close Calls



TBH2 – vegetation encroaching on the cess



BML3 163m 15ch - Gap in the Troughing route



Whitchurch Station area - Metal spikes poking through wooden sleepers

Unsafe Conditions



Safety Hour

In 2016, **65%** of you talked about safety **every week** and discussed how you and your team could make safety improvements.



**everyone
home safe
every day**



Success Stories

Team Discussion

Share team / area specific success stories

Team Discussion

What else can you do to get you and your team home safely every day?



Back to Work – Start Safe

Historically on the Route we see an increase in accidents during the winter period and immediately after the Christmas break

85% of our injuries are as a result of a Slip, Trip or Fall (STF), manual handling or driving-related incident

For the New Year, it is important to re-focus on:

- **the task at hand**
- **any hazards and risks**
- **any changes that may have occurred whilst you were away**

Continue To Look After Each Other





Maintaining A Tidy Railway

- **Why?**

Lots of debris on the track & 40% of our accidents are due to slips trips & falls so lets sort it out

- **How?**

Every time you go onto the railway, collect at least 1 piece of debris, put it in the new womble bags and/ or the skips provided (see skip map on next slide)

- **How?**

Also you **MUST** raise a close call each time you pick up debris and register the close call as **CLOSED** because you have rectified it by making the area safe

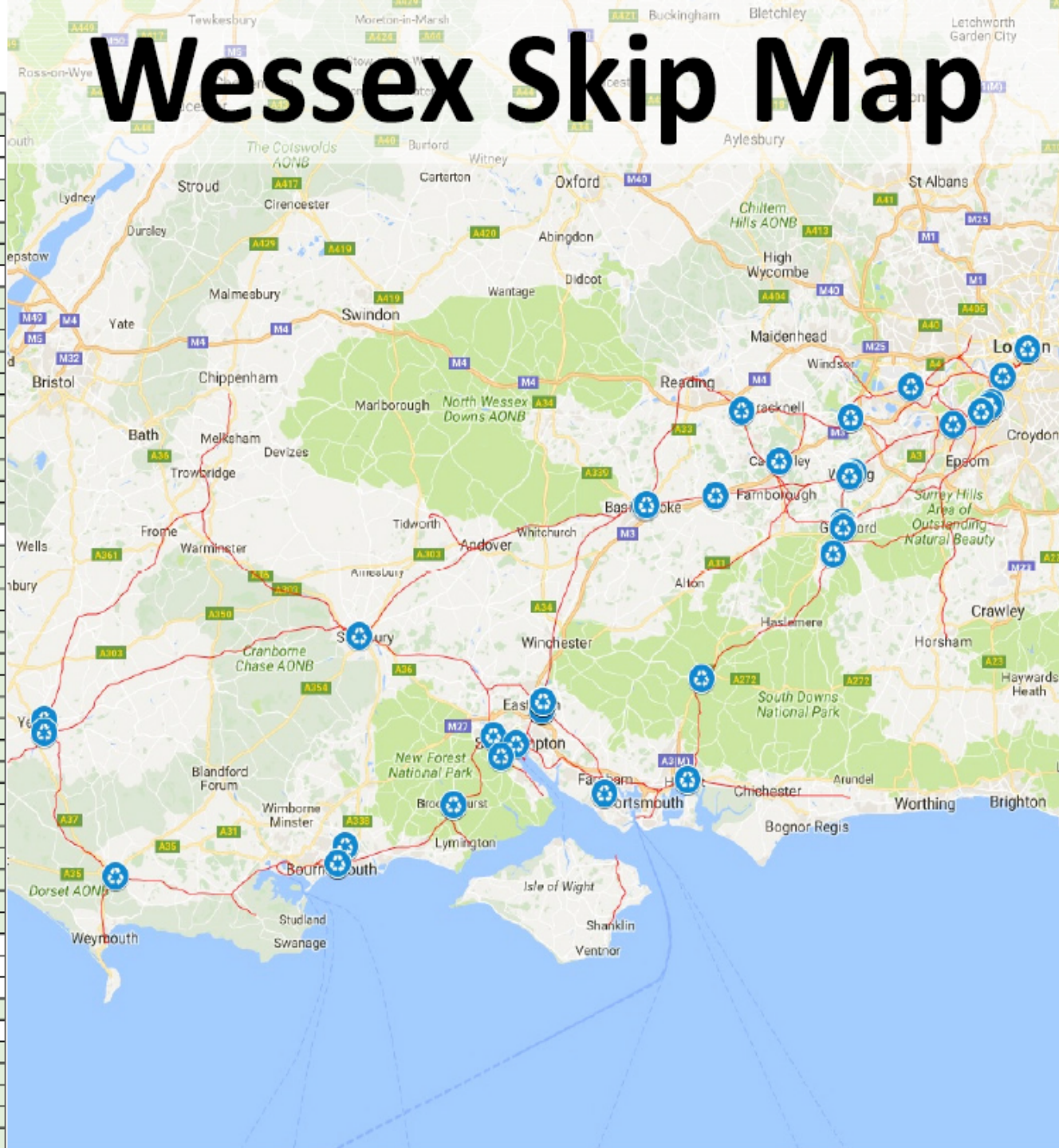
- **What?**

We will end up with a much tidier railway for us all to be proud of, and reduce accidents on the railway

Skip List

Basingstoke ASC, Basingstoke Station, Basingstoke, RG21 5NB	Y	Y
Basingstoke P/Way, Station Car Park., Basingstoke, Hampshire, RG21 7JE		Y
Bletcheynden Terrace, Kingsbridge Lane, Southampton, Hampshire, SO15 1GW	Y	
Bournemouth S&T, Bournemouth Station, Bournemouth, BH8 8HX	Y	
Bournemouth ASC, Off Holderhurst Road, Bournemouth, Dorset, BH8 8AR	Y	Y
Brockenhurst Signal Box, Brockenhurst, Hampshire, SO42 7TW	Y	
Brockenhurst Station, Hampshire, SO42 7TW	Y	Y
Camberley, Heathcote Rd, Camberley, Surrey, GU15 3RN	Y	Y
Clapham Depot, 73-75 Plough Road, London, SW11 2UH	Y	
Dorchester Pw/S/T, Monmouth Road, Dorchester, DT1 2DP	Y	Y
Eastleigh E&P, Campbell Road, Eastleigh, Hampshire, SO50 5AD	Y	Y
Eastleigh ECR, Campbell Road, Eastleigh, Hampshire, SO50 5AD	Y	Y
Eastleigh Locking Welders, Campbell Road, Eastleigh, Hampshire, SO50 5AD	Y	Y
Eastleigh Main Offices, Dutton Lane, Eastleigh, Hampshire, SO50 6AA	Y	Y
Eastleigh Msp Storos, Dutton Lane, Eastleigh, Hampshire, SO50 6AA	Y	Y
Eastleigh S&T Signal Box, Twyford Road, Eastleigh, Hampshire, SO50 4DA	Y	Y
Eastleigh Telecom Depot, Dutton Lane, Eastleigh, Hampshire, SO50 6AA	Y	Y
Raynes park ECR, Rainbow Business Park, Raynes Park, London, SW20 8NE	Y	Y
Fareham PWay Depot, Upside Yd, Fareham, Hampshire, PO14 1AS	Y	Y
Farncombe Signal Box, Farncombe Street, Farncombe, Surrey, GU7 3LH	Y	Y
Feltham Pway, Network House, Feltham, Middlesex, TW13 4BY	Y	
Guildford ASC, 3 Station View, Guildford, Surrey, GU1 4JY	Y	Y
Guildford Depot, Off Guildford Park Road, Guildford, Surrey, GU2 7PD	Y	Y
Guildford Off Track, Woodbridge Meadows, Guildford, Surrey, GU1 1BJ	Y	
Havant Depot (Signalling Centre), 32/34 Centenary Gardens, Havant, PO9 2LS	Y	Y
Marchwood Signal Box, Plantation Drive, Southampton, Hampshire, SO40 4YL	Y	
Network Rail, Waterloo Station/Lower Road, London, London, SE1 8SJ	Y	Y
North Yard Car Park Basingstoke Mmt Team, Basingstoke, Hampshire, RG21 5NE	Y	Y
Petersfield Signal Box, 5 Station Rd, Peterfield, Surrey, GU32 3EE	Y	Y
Redbridge Str, Tate Rd Redbridge, Southampton, Hampshire, SO15 0NL	Y	Y
Salisbury Depot & SB, Churchfield Rd, Salisbury, Wiltshire, SP2 7NW		Y
Station Yard, Station Hill, Winchfield, Hants, RG27 8BX	Y	Y
Surbiton P Way Station Car Prk, Off Glenbuck Rd, Surbiton, Surrey, KT6 6DL	Y	Y
The Stable Block Depot, Station Approach, Woking, Surrey, GU22 7AF	Y	Y
Upside Car Park, Bournemouth Stores, Bournemouth, Dorset, BH8 8HX	Y	Y
Virginia Water Stn, Station Parade, Virginia Water, Surrey, GU25 4AA	Y	Y
Waterloo S&T Accomodation, No.1 Spur Road, Waterloo, London, SE1 8SW	Y	Y
Wimbledon Asc, Dundonald Road, Wimbledon, London, SW19 3QJ	Y	Y
Wimbledon Maint Unit, 111A Alexandra Road, Wimbledon, London, SW19 7JY	Y	Y
Wimbledon Stable Block, Dundonald Road, Wimbledon, London, SW19 3QJ	Y	
Wimbledon WDU/S & T, Dundonald Road, Wimbledon, London, SW19 3QJ	Y	
Wimbledon West Goods Yard, Dundonald Road, Wimbledon, London, SW19 3QJ	Y	
Woking Asc, Station Approach, Woking, Surrey, GU22 7AE	Y	Y
Woking Hq, Off Guildford Road, Woking, Surrey, GU22 7QE		
Woking Imdu Depot, York Road, Woking, Surrey, GU22 7XW	Y	Y
Woking Stores, Off Poole Road, Woking, Surrey, GU21 6DY	Y	Y
Wokingham Station Industrial Estate, Oxford Rd, Wokingham,, RG41 2AQ	Y	Y
Yeovil Junction Station, Yeovil, Somerset, BA22 9UU	Y	Y
Yeovil Pen Mill Signal Box, Yeovil, Somerset, BA21 5DD	Y	Y

Wessex Skip Map





Back to Work – Start Safe

KEY POINTS

- Upon your return to work please ensure you have been briefed and are **aware of your task at hand**
- Check your work area for hazards and **report any issues before starting**
- Where hazards can be removed, use the **womble bags** to make the area safe and maintain a Tidy Railway
- Continue to use reporting tools such as the close call system to **report both unsafe acts and unsafe conditions** and where safe to do so remove the hazard



Back to Work – Start Safe

KEY POINTS

- Continue to use **safety hour** every week to discuss how you could make safety improvements
- If you need to **pause or stop** a job to make it is safe, then do so
- If you feel something is unsafe or unclear, please **speak up and challenge**
- Remember we are all responsible for our & our teams safety and must continue to work together to deliver our safety vision of:
EVERYONE HOME SAFE EVERY DAY



Thank you

Have a safe start to 2017



**everyone
home safe
every day**