



Infrastructure Projects Southern *Home Safe*

The Southern Region's Weekly Safety Update

25 January 2017

Two too many

Last weekend there were two accidents reported on sites in the southern region.

A lorry driver injured his finger while unloading used sleepers in a yard. The lorry equipped with a crane arrived at Worthing compound to unload the redundant concrete sleepers. When the lorry driver, who was standing at ground level, released the ratchet strap from the load a concrete sleeper moved trapping the end of his finger. This resulted in a crush injury that required hospital treatment. The lorry driver was not wearing Cut 5 Gloves at the time of this accident.



Remember... While the cause of the incident is still under investigation remember to always wear the correct PPE whilst undertaking work or visiting sites within the southern region. More details can be found in our [Southern Shield PPE Guide](#).

In the second incident; a supervisor was overseeing the lifting and placing of 60kg polystyrene blocks. The work had been planned to avoid manually lifting the blocks. During the process of lowering one of the blocks down to the working platform, the block moved forward and fell out of the excavator bucket and struck the supervisor on his hard hat. This caused him to fall over onto the adjacent concrete surface. An ambulance was called and the supervisor was taken to hospital.

Fall at WIT

At Waterloo International Terminal a COSS was walking on newly laid ballast. The ballast moved causing him to slip and fall face down onto the ballast. Due to the impact of the fall his safety glasses caused a minor cut to the bridge of his nose.

Remember... Take care when walking on any uneven surfaces.



Click on the shield above to access our website

Close Call

During a senior management walk around at Waterloo International Terminal; two pieces of cable tray were seen hanging at head height with sharp edges protruding that could cause a face or an eye injury. A Close Call was raised and a reminder was circulated to all staff to ensure they were wearing adequate eye protection on site at all times.

Remember: If you see something that could cause an accident, fix it or quarantine it and report it as a Close Call. You could stop someone getting hurt.

Helping a good cause

Martin Ford Senior Construction Manager, IP Wessex is currently raising funds for the Community First Responder team in the east of England to buy kit bags. A Community First Responder helps to stabilise a patient and provide the appropriate care until a paramedic arrives on scene to take over the treatment. Each kit bag costs around £1500 and is a small price to pay to save a life.

For further information regarding Martin's appeal or to make a donation to this worthy cause please click [here](#).

Contact us: shield@networkrail.co.uk

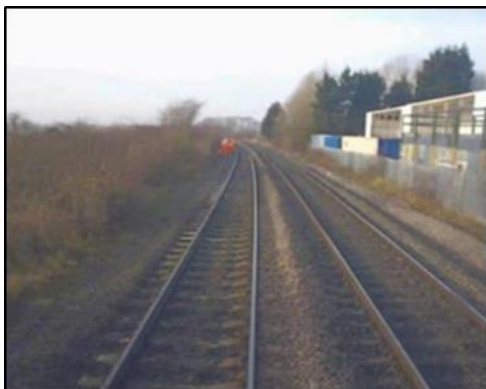
Bosch Angle Grinder recall

A recall notice has been issued after Bosch Power Tools discovered that, due to a faulty component, the cutting or grinding disc together with the fastening fixture (spindle) could become detached during operation on a limited number of their angle grinders. Bosch have advised that, with immediate effect, angle grinders with specific models and serial numbers should no longer be used or provided to others.

Further details of the recall including the affected serial numbers and models can be found [here](#).



Near Miss at Saxby



On Monday 5 December an eight man team consisting of a Network Rail Safe Work Leader (SWL) and seven subcontractors were digging out wet beds on the up main line near Saxby in Leicestershire.

The SWL set up a work site taking Line Blocks on the Up and Down Main lines.

A Kango that had been used for the work was left in the six foot

on a high ballast shoulder. Vibrations caused by the freight train on the Down Main caused the tool to roll down the shoulder and come into contact with the six foot rail of the Up Main line. A Trackman stepped onto the track, to retrieve the Kango and stepped out again back into the position of safety just as a passenger train approached on the Up main around a curve at 90mph.

Further information on this incident and discussion points can be found [here](#).

Did you know?

Did you know? That all work sites must have the welfare provisions. This should be provided in accordance with standard NR/L3/INI/CP0036 (the Provision of Welfare Facilities).

The specific arrangements must be recorded on the '[appendix B](#)' form, which should be posted on the site notice board for the workforce to view.



Environmental news

Star Lane Oil Spill

After connecting a trailer to an RRV a small hydraulic oil leak was observed. The spill was cleaned up using a spill kit. The RRV had a very minor brake fluid leak (less than 100ml) on one of its trailers so had to abort its run and return back to the access point.

Do you know where your spill kits are located?

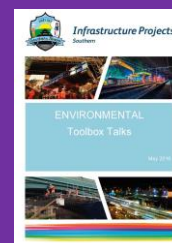
Redhill Substation

During a review of the site arrangements at Redhill Substation it was identified that the planning arrangements hadn't fully considered the occurrence of a methodology change.

Remember: many accidents start with poor planning. Do you review your plans when a change occurs?

At the same site, it was also recognised that there was a knowledge gap with regards to the transporting and handling of oil.

Did you know there is a suite of environmental toolbox talks available? These provide further information regarding environmental factors that may need to be considered on your site.



If you would like a colleague to receive Home Safe, please contact shield@networkrail.co.uk