



Infrastructure Projects Southern *Home Safe*

The Southern Region's Weekly Safety Update

26 April 2017

Location, location, location!

An Operational Close Call was raised after the planned location that earthing straps were going to be placed was changed. When a worksite was being set up, it was discovered that the location for fitting of the straps was not suitable due to a guard boarding on the conductor rail. The strapman consulted with the ES, and the straps were placed two



chains into the worksite. However, this change of location was not communicated to either the PICOP, or the ECO. An inspection by the local ODM found the fault. The incident is currently under investigation.

Have you got the correct approvals for any proposed change to the safe system of work? Should you call a Time Out Take Five in this instance?

Operational Close Calls

Two Operational Close Calls were raised on a site in the southern region. An operative moved the points under a train being used as a barrier to the operational railway which caused a possession irregularity. In the second occurrence the Operations Delivery Manager requested an obstructing train to be moved to inspect the S&C as they suspected a points run through. As a result of moving the train the points run through occurred. This incident is currently under investigation and the team are currently developing a protocol which clarifies the existing process for operating points.

Stop. Make a Change



Last week saw a national safety stand down across the infrastructure and construction industry. Stop. Make a Change is a joint national initiative targeting improvements in health, safety and wellbeing for the sector. To mark the stand down a number of events took place in the southern region including a plant awareness and mental health and wellbeing awareness event hosted on 17 and 18 April collaboratively by BAM Nutall and Costain. There were a number of events held during the week including a Mates in Mind briefing hosted by VolkerFitzpatrick.



*Click on the shield above to
access our website*

Do you use the Southern Shield website?

The Southern Shield website is the go to place for literature and information in the southern region.

Do you require a copy of the Charter or the PPE Guide? Maybe you are looking for a copy of the Track Access Protocol or require some health and wellbeing information? Whatever you are looking for the Southern Shield website holds the latest safety information, posters, and documents which you can download alongside safety videos that you can share with you team. Visit:

www.southernshield.co.uk.

Environmental incident

An environment incident occurred after a road sweeper was found abandoned and leaking hydraulic oil. A member of staff discovered a trail of spill kit granules near to their site which led back to the damaged road sweeper. The road sweeper was parked over the drain but the oil was not leaking into the drain.

Contact us: shield@networkrail.co.uk

Home Safe

Three injuries

This week three manual handling incidents were reported in the southern region. In one incident an operative hurt his finger after he was loading a bag with tarmac by hand with his colleague. A piece of tarmac loaded by one of the operatives caught and squashed the finger of the other. Both operative were wearing cut 5 gloves at the time. The operative's right little finger was trapped causing bleeding and some bruising. He was given first aid on site and returned to work.

Think...can your activity be done in a safer way that can stop somebody from getting hurt through manual handling?

In another incident, an operative felt a pain in his back after he bent down to pick up a chisel bit after working in a team excavating and manual handling materials. As a result of this incident a reduction in manual handling was adopted on site.

In another incident an operative twisted his back whilst he was putting redundant trunking into a waste skip. Work was stopped on site and the team were briefed on safe manual handling techniques.

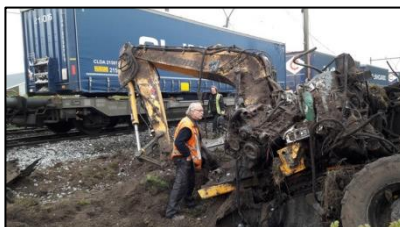
Tools on the line

An Operational Close Call was raised after a chainsaw was damaged by a train at Stone Crossing. A team was undertaking fault work replacing timber decking and were in a position of safety on the other side of a pedestrian crossing. However, they had left a chainsaw near the running line which was subsequently hit by a train. No injuries to staff members were reported although damage was sustained to the piece of plant.

Remember... in the IP southern region we use the Track Access Protocol to ensure that the safe system of work with the lowest risk level is used.

Collison in Holland

A collision between a freight train and a crane in Holland left rail equipment severely damaged. Early reports state that they train stuck the excavator and dragged it for several meters. The excavator driver managed to jump out in time to avoid injuries. A number of the overhead lines were also damaged in the incident. Although the cause of the accident has not been



determined as yet; further information regarding Adjacent Line Open (ALO) working can be found on [Safety Central](#).

Remember... when working ALO make sure that there is an appropriate ALO Plan in place!

In other news

A Close Call was raised after broken and uneven troughing was spotted near the Poole Harbour site. The site team fixed some of the broken troughs and notified the Maintainer of the hazard.



Did you know... unstable troughing could potentially fall and injure anyone walking next to it?

Another Close Call was raised after train enthusiasts climbed on to fences on a site to see a steam train that had stopped at a nearby station. The site team guided the group to a safe area where they were able to take pictures. They were supervised by the site team at all times.

Remember... Everyone Home Safe Everyday

You can download a copy of our Close Call poster at www.southernshield.co.uk

