



# Infrastructure Projects Southern *Home Safe*

The Southern Region's Weekly Safety Update

05 April 2017

## Heads up



The shoulder of an arch at the London Bridge Station redevelopment project was breached. This was as a result of excavating overburden for the formation of a pin for a structural ground beam. The excavator operator became aware of the penetration, stopped work and

reported the incident to his supervisor.

It was discovered, as a result that five kilograms of fragmented masonry fell into the gallery area below. Barriers have now been installed in the gallery area to prevent access under the breached arch. There was no one in the immediate vicinity at the time and therefore nobody was injured. The incident was initially classed as a Close Call but upon reflection it was decided that the incident should be treated as significant due to the potential to undermine the structure. This incident is currently under investigation.

## Operational Close Call at Lewis

An Operational Close Call was raised after the power supply to an open line was switched off during the changeover of a signalling 650 volt power supply. The signaller contacted the COSS for the works and the supply was switched back on by the Tester in Charge. Upon initial examination it was found that cables going to the isolation switch had been crossed over resulting in the wrong circuit being isolated. This was found to be a pre-existing fault; an investigation is currently under way.

## Best practice at Tunbridge

A purpose built enclosure has been made to house site safety equipment on the BCM Construction site at Tunbridge Wells. The safety point includes fire extinguishers, a first aid kit, an eye wash station and a defibrillator unit.

***Does everyone who works on or visits your site know where all the safety equipment is?***



Click on the shield above to  
access our website

## Environmental incident

A category 4 environmental incident has been recorded after a hydraulic hose on a hire lorry burst resulting in a small (less than one litre) oil spill.

## More cable news

In Brighton a team constructing an under road crossing discovered four damaged unprotected cables. A local shop keeper approached the workgroup and advised he had lost power to his shop. EDF Energy was contacted and went out to the site to repair the cables.

## In another incident

At Tunbridge Wells coaxial cables were damaged while excavation works were taking place on the station platform. The cables were not identified on any services drawings and were only buried 50 millimetres below the surface. The cables were repaired by the team onsite.

Contact us: [shield@networkrail.co.uk](mailto:shield@networkrail.co.uk)

# Home Safe

## After the dust settles



A Close Call was raised after 100 millimetre holes were left in the site compound at Ascot Station car park. The holes were left as a result of the concrete supports to site office being removed. This caused a trip hazard, so the site manager instructed staff to place chapter 8 barriers around the holes and fill it with type 1 to eliminate any further risk.

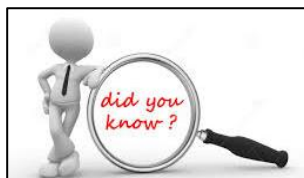
**Do you leave your sites in a safe condition after work is completed?**

## Incident at a site in Peckham

The Police and Fire Brigade attended a site in Peckham after a car being driven by a member of the public swerved and crashed into bollards outside the site. A member of the site team took the keys from the vehicle as the driver attempted to flee the scene. The driver then chased the team member, who then threw keys over a fence. No injuries were reported as a result of this incident.

## Did you know?

Did you know that Any Line Open (ALO) plans are not required to be reviewed by Network Rail? However, in IP Southern completed copies are required to be forwarded to Network Rail for retention and possible audit. Network Rail Project Managers or Contractors should forward copies of all ALO plans (and any revisions) to: [Jane.Jones@networkrail.co.uk](mailto:Jane.Jones@networkrail.co.uk).



## Cable pulling

A number of accidents involving cable pulling have been reported this week.

In one incident an operative stumbled whilst pulling cables at Embrook substation. The works were stopped and the operative was taken to hospital.

**Lesson learned... always review the underfoot conditions prior to completing cable pulling tasks.**

During cable pulling activities at New Cross Gate, an operative bruised their foot after the cable fell and caught him on the bridge of the right foot. The operative was taken to hospital and an x-ray was taken, which revealed that there were no broken bones or torn ligaments.

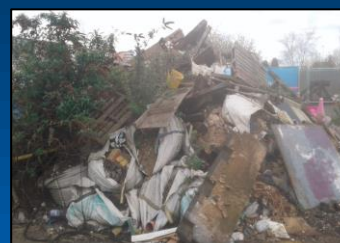
**Remember... large cables don't always behave as expected. Concentration on the activity at hand is vital until the cable is safely at rest.**



## In other news...

### Close Calls

A Close Call was raised after a large refuse pile and scrap rail was left at the Poole Harbour site. The site team will be clearing the rubbish to avoid others tripping over the pile alongside the risk of attracting vermin.



In another incident a Close Call was raised after an operative was seen working in a confined space without a safety helmet on. There was the risk that the person could have banged their head on a nearby concrete slab. The operative was asked to put his hard hat on.

**Remember... the Southern Shield PPE guide gives guidance on the PPE requirements in the southern region.**

The Southern Shield Close Call poster is available on the Southern Shield website. Remember... See it. Fix it. Report it! If you see a hazard or something dangerous raise a Close Call.

**If you would like a colleague to receive Home Safe, please contact [shield@networkrail.co.uk](mailto:shield@networkrail.co.uk)**

Contact us: [shield@networkrail.co.uk](mailto:shield@networkrail.co.uk)