



Infrastructure Projects Southern Home Safe

The Southern Region's Weekly Safety Update

Who is responsible for safety?

Last week we reported that a Safe Worker Leader (SWL) 1 tried to take a line blockage from the signaller with the wrong exit signal noted in the Safe Work Pack. This was not picked up by the Safe Work Leader on review of the pack or when inspecting the site prior to starting work.

The investigation identified that the Planner had incorrectly selected the wrong protecting signal; however the Planner believed that because the line blockage had been approved by the (Green Zone Access Controller) GZAC, the protecting signals had been checked. The investigation has clarified that the GZAC does not check the protecting signals are correct for the line blockage.

Despite many people being involved in the planning and verification process for this task, the wrong protection signal was still selected and everyone then assumed it was correct.



Always be sure the required plans and permits are in place, before you start a job or go on or near the line.

Where safety is concerned, don't assume...always check.

Raising the bar

The Southern Shield Safe Use of Plant handbook, which covers the safest way to use non-rail mounted plant in a rail engineering environment has been updated following feedback from Home Safe readers. This includes changes to the reference documents in the mobile crane section and some abbreviations.

To read or download this document, [visit the Southern Shield website](#). This document is also compatible for printing in A5.



Best Practice at McNicholas

When McNicholas found that their lost time injuries were rising they decided to take proactive action to reverse the trend. One Best Practice they introduced was pre-worksite checks by site supervisors and work gangs. By taking a **Time Out Take Five** prior to starting work they can review site conditions and the work to be carried out. They will then stop and challenge if they think something is "not quite right" with a Close

Recognising our people

Home Safe covers many accidents and incidents when things have gone wrong. However, this week, we recognise some of our people who routinely go above and beyond to get Everyone Home Safe Every Day. Their contribution was recognised by the presentation of Southern Shield 'goody bags'.



A goody bag was presented by Phil Mellish Senior Construction Manager, to Dave Wilson Colas Supervisor for his contribution to safety and site vigilance. Dave said, "I have worked with my team for a long time now and take their welfare and safety very seriously. They are a good hard working set of guys and I feel responsible for not only organising their work but more importantly organising their work safely. I would hate to see one of them not going home at the end of the day due to being injured."



Dave Jarvis, Colas Civils Manager presents Site Engineer Colm Connelly in recognition of his pro-active attention to safety on site. Colm said "I always ensure all risks have been identified and mitigation is in place before I undertake any task."

Call raised for any hazards or unsafe conditions. **Could you take five minutes at the start of work to prevent an accident?**

Walking close to live OLE

An overhead line incident occurred near Crewe station when the overhead line contact wire parted as an electric train passed. This caused damage to the train's pantograph and resulted in the contact wire hanging down. When overhead line staff arrived they found that staff had been walking in close proximity to the live contact wire that was hanging down. An emergency switch off had not been requested.

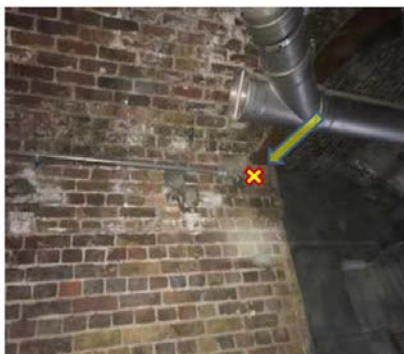


The parted contact wire is believed to have been within 30cm of head height and staff had walked beneath it. In September 2014, a train driver suffered extensive electrical burns in very similar circumstances when they left the cab after the overhead line had been damaged.

Do you know who should you contact if you believe the overhead line equipment (OLE) may be damaged?

Electrical conduit cut

Fig. 1 Electrical Conduit after being cut with reciprocating saw SU-54.



Whilst undertaking 'soft stripping' works, an operative cut through a live conduit using a reciprocating saw. The isolation certificate issued for the works had not taken into account a live conduit which had previously been installed above a false ceiling.

The operative, believing the conduit was part of the soft strip, cut through it in preparation for removal and did not realise he had

cut through a live conduit. It is believed that the main distribution board tripped instantly and the same night the external façade lighting failed to switch on. The investigation is ongoing but do you always consider:

- All known services must be identified on service drawings and made available to those responsible for works
- Anyone providing isolation permits must make sure all services are identified and clearly marked up for removal
- Supervisors must make sure that anyone working around electrical services understands the identification marking for any services to be removed.



Dave Wilson, Senior Supervisor presents Andre Galita from Ganger - Rail System with a Southern Shield goody bag. Andre said, "Working on front line can be hard work and it's good that you always watch your mate's back and we look after each other from a safety aspect".



An award to Riah Martin who is very safety conscious and said he welcomed the new track access like any initiative that makes working on track safer.



Steel fixer, Ion Catalin Enache has been nominated by all his team. He looks at each task and risk assesses it before tackling it. After checking the paperwork Ion doesn't hesitate to raise issues with his supervisor if he feels something is not right or could be done more safely.



And finally: well-deserved awards to Eduart Lika (above) and Guancarlo Pacitti (below).

