

IMDM INNER – Byfleet and New Haw

Title: Eye impact/contamination

Injury: Scratched Cornea

Incident

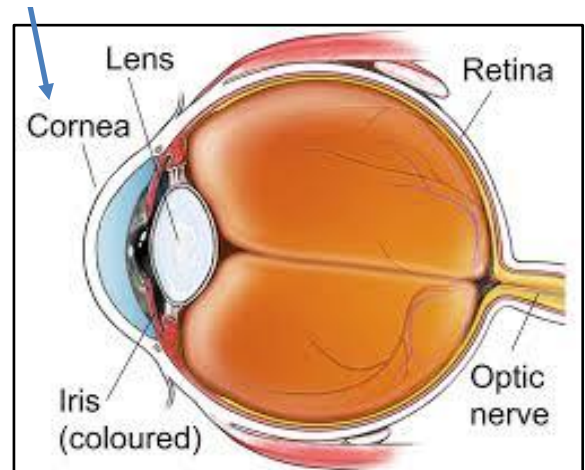
On Friday the 28th of June 2019, a P-Way team based at Woking had been fish-plate adjusting at Byfleet and New Haw. Following the completion of the work, the team removed the kit from site and began loading it onto a flatbed van parked at the station.

A Technician was lowering a pair of fish-plates from his shoulder onto the flat load platform of the vehicle, when the plates slipped from his grip and dropped 6 to 9 inches onto a trolley handle which flipped up and struck him directly in his right eyeball.

The Technician instinctively put his hand to his eye and further contaminated it, due to the grease and dirt on his gloves. He was not wearing safety glasses when the incident occurred.

His colleagues immediately treated the injury with eye-wash and he was accompanied to hospital, where he had to wait over 5 hours to be seen by an eye specialist. The IP was advised that he scratched his cornea and was given a temporary protective contact lens and two types of eye drops to promote the healing process.

As well as protection, the Cornea is responsible for 65-75% of the eyes total focusing power!



Lessons Learnt/items to discuss

- What are the risks away from the track? Do we consider tasks that are carried out when we are not 'On or near the line'?
- What do you think caused the most damage? Was it the impact, or the rubbing of the eye with contaminated gloves? Eye wash can clean an injury to an eye, it can't replace it.
- The gloves. Second incident in two weeks where a member of staffs' hand has lost purchase on equipment due to grease/dirt on their gloves. There are Morpich and Kinetic gloves available.
- Prescription eye-wear is available through NR on My Connect. The link is below;

[apply for a safety eyewear eVoucher](#)