

IMDM INNER – 16th June 2019

Title: Simplex Jack handle accident Injury: Laceration to Right eye

Incident

In the early hours of the 16th of June, a Section Supervisor based at Waterloo P-Way suffered a severe laceration above his right eye.

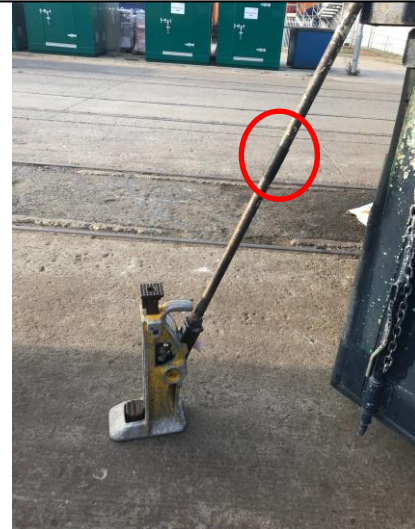
The Supervisor was part of a 4 man team who were lifting and packing the 1582A points to remove a ban to facing moves.

The team were working within a line blockage and had to lift the switch, to insert packing pieces to remove hogging that was present (hogging is where the switch rail is raised above the sleeper level and not sitting flush on the baseplate).

The Supervisor was operating a Simplex Jack and was pushing the handle down into position however, before it had 'clicked' into place, the handle slipped from the Supervisors grasp and sprung back up, striking him above the right eye and causing a severe laceration.

25 stitches were required at hospital to treat the injury.

The Supervisor was not wearing safety glasses.



Above is the Simplex Jack and handle in use at the time of the accident. Circled is the rubber grip which should be at the top of the handle.

Lessons Learnt

- Have you checked that the equipment that you are to use is in good condition, in date and not faulty before you use it?
- Are you trained to use the equipment, no matter how **simple** it is to use? Don't be fooled, there is a reason NR carry out small tools training.
- PPE is the last line of defence:
 - Are your gloves suitable for the task? Are they in good condition? Will they give you protection?
 - Are you wearing your safety glasses?

Guidance on using rail jacks is available within the 'How to guide' in the Info Centre app.