

Safety Bulletin

A Workforce Accident has taken place



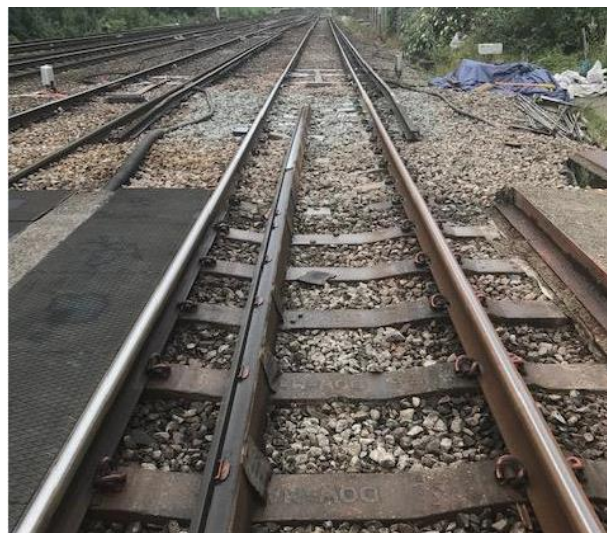
Issued to: Southern Region

Reference: Compound Fracture

Date of Issue: 27/07/2020

Location: Brookwood, Woking. Wessex Inner

Contact: peter.kinsella2@networkrail.co.uk
WHSEA Inner DU



Overview

On Wednesday the 8th of July 2020 at approximately 02:00, a member of staff sustained a compound fracture when a scrap rail weighing approx. one ton, rolled over and crushed his right foot.

The injured party (IP) was part of a team tasked with the removal of a rail defect, using Iron Men, on the Up Slow of the BML1 at Brookwood RRAP.

Having cut and lifted the affected section of rail from the track and onto the 4foot, the team were installing the new rail when the scrap rail which measured approx. 54 (16.5m) that had been left in the 4foot, rolled on top of the IP's foot. The team lifted the rail manually and moved the IP away from the track, where First Aid was administered.

The IP was taken to the hospital where it was confirmed, he had sustained a compound fracture.

It is currently not clear what caused the scrap to roll. Later inspection revealed patches of ballast on sleepers throughout the site of work and a kink in the old rail. These two conditions may have contributed to the rail laying unevenly in the four-foot making it unstable and causing it to fall when a minimal force was applied unwittingly by a member of the team.

Discussion Points:

Whilst this incident is being investigated, it is worth considering;

- *The importance of site preparation/scoping prior to work commencing*
- *Ensure there is clear on-site communications and control when team handling is taking place*
- *Competency and experience within the team for the task being undertaken*
- *Are your boots in a good condition and do they have metatarsal protectors?*

Part of our group
of Safety Bulletins

Safety
Alert

Safety
Bulletin

Safety
Advice

Shared
Learning