

PROMPT CARD

To assist railway staff when making a call from an authorised Crossing The Line Procedure (CTLP) location
WX-CLT-PBSS, PIRBRIGHT SUB STATION, PAA1 – 29M, 60 CHAIN

TRAIN SIGNALLING REGULATIONS AND OTHER RELEVANT INSTRUCTIONS APPLY

1. Check that you are at the correct location
2. If using a standard mobile smart phone or GSMr handset, check and confirm that you have sufficient phone signal strength.
3. Place call to the controlling Signaller
4. Ensure that you are speaking to the correct Signaller
5. State your LOCATION, NAME and ROLE and that you wish to use 'Crossing The Line' procedure
6. CONFIRM all appropriate details with Signaller
7. The Signaller will check their panel and either give permission to cross or refuse permission and tell you to wait and call back at an agreed time



If permission is granted, **CROSS IMMEDIATELY**. When you have reached a position of safety,
confirm this with the Signaller and end the call.

If permission is refused, **DO NOT CROSS**. Wait in a position of safety and call back as instructed.

When crossing the line, maintain the phone line open, placing the GSMr handheld or mobile phone down by your side

When crossing Bridges and Viaducts you must be able to be in a position of safety at least 10 seconds before a train arrives

NOTE:

If contact with the Signaller is lost, complete your crossing of the line activity and reach a position of safety.

On reaching the position of safety on the opposite side you must call the signaller IMMEDIATELY.

A TRAIN MAY BE APPROACHING ---- DO NOT ATTEMPT TO CROSS BACK OVER

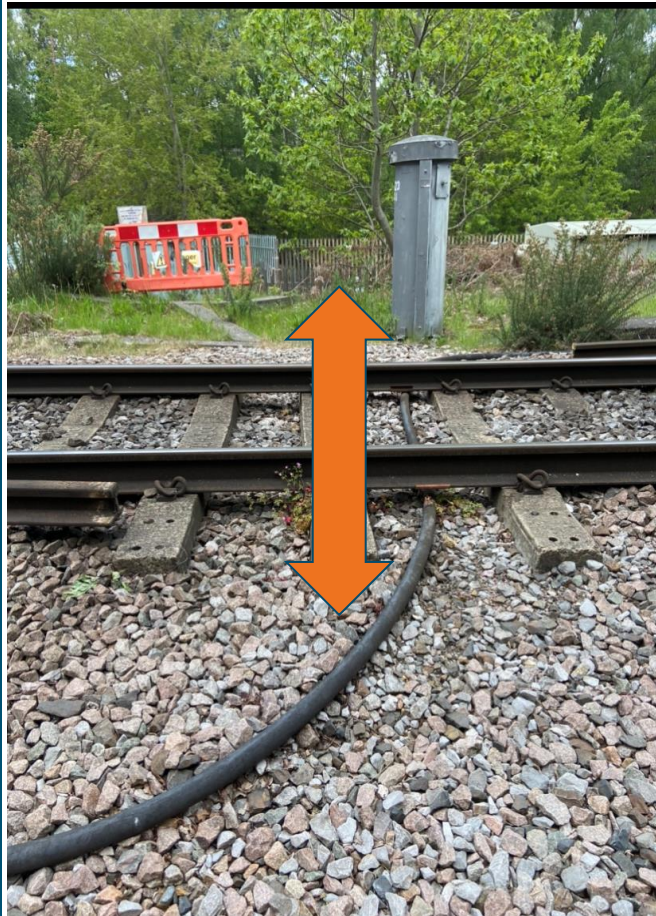
Prompt card for track workers when undertaking 'Crossing The Line' procedure



Access point

WX-CLT-PBSS, PIRBRIGHT SUB STATION, PAA1 – 29M, 60 CHAIN

View from crossing point in Down
Direction



View looking across from UP side

